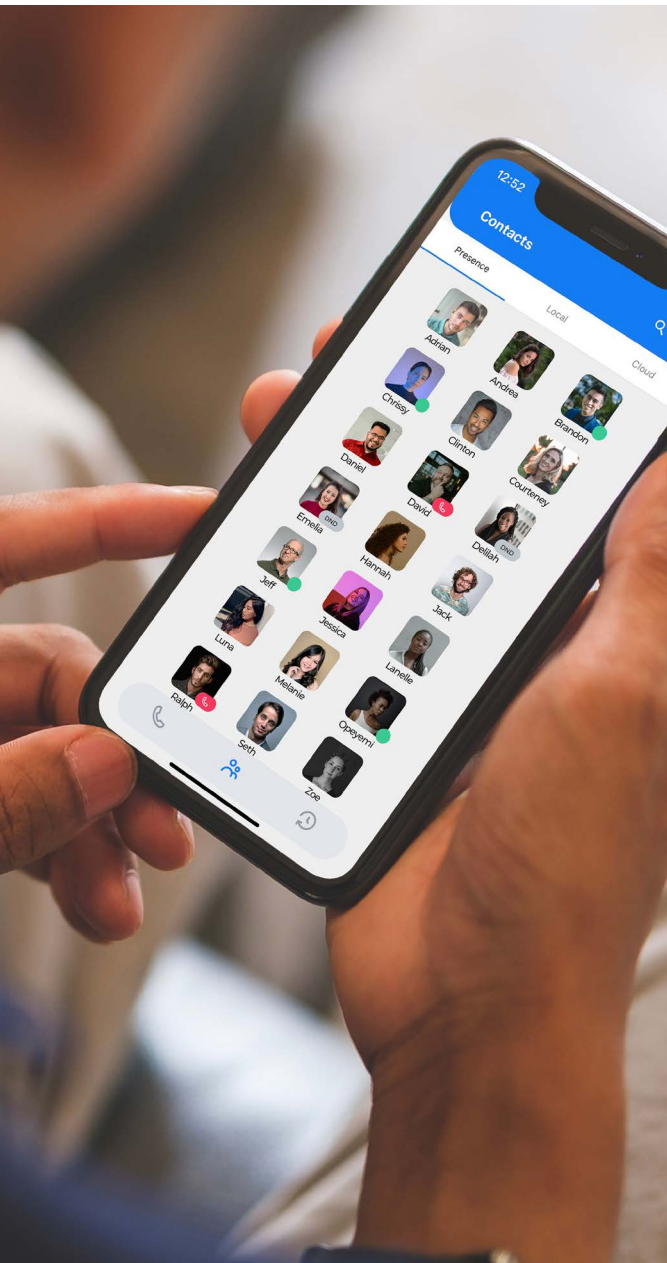




Unified Communication for Mobile



Work from Anywhere
Work with MobeX



Multi-feature softphone client

MobeX is a WebRTC (Web Real-time Communications) softphone client connected to NTA's hosted network, enabling you to manage your business communications easily and efficiently. Enjoy limitless communications with ease of use to make and receive telephone calls over a secure encrypted internet connection. Simply connect your business extensions to MobeX licences to start reaping the rewards of digital secure calling.

With MobeX, users have the communication tools they need to work efficiently and productively, whether in the office or working remotely.

In a world where hybrid working is becoming increasingly more prevalent and businesses are delving into a more remote working environment, being able to communicate with colleagues and customers without the use of static hardware is becoming integral. MobeX+ is the mobile version of the softphone available for both Android and iOS devices.

MobeX+ for mobile has been designed and configured for all users. Whether you work in a busy industry and require quick and reliable access to calls, or you take a more relaxed approach and just need the basics, MobeX+ is the ultimate mobile tool to possess.

The ultimate softphone

MobeX+ Mobile is linked to your desk handset, allowing you to take work calls no matter your location.

Keep the benefits

Utilise services such as bundle minutes and call recording by continuing to use your office extension on MobeX+ whilst on the move and away from your desk.

Available for all

Available for both Android and iOS device users, download MobeX+ from your AppStore or Play Store today.



Work from anywhere

User Friendly Interface

Ease of use is paramount to getting work done quickly and efficiently. MobeX+ is designed with responsive elements and simplistic navigation to make your business experience operate smoother. The modern and intuitive interface improves user experience by making it easier to navigate and access softphone call features, saving time, energy and increasing productivity.

Easy to use Dialpad

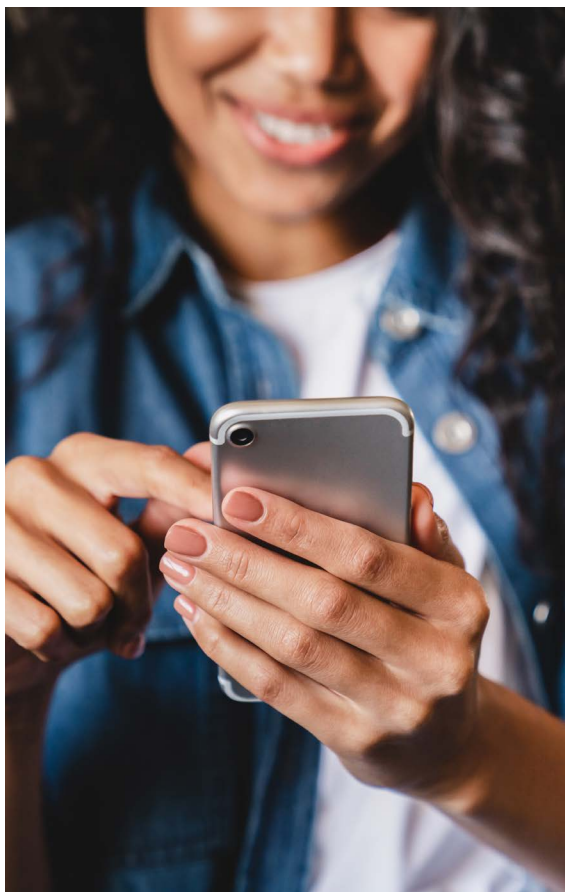
An easy to use dialpad improves user experience by making it easy to navigate and access softphone features, saving time and increasing productivity.

Presence

Sometimes better known as Busy Lamp Keys (BLF) takes knowing who in your organisation are on calls to the next level. In today's predominantly remote working environment, it is imperative to know when team members are online and offline. User presence capabilities provide company-wide real-time user status updates. Know when users are available, on a call, on Do Not Disturb and more with user status indicators. Easily access user information by tapping on each member's avatar.

Local & Cloud Phonebook

MobeX+ provides the ability to access more than just your cloud contacts. The softphone can also utilise all local contacts on your smartphone by you as the user simply granting access in the quick setup. Use your softphone to dial out and interact with anyone, on any network, using any device, in any location.

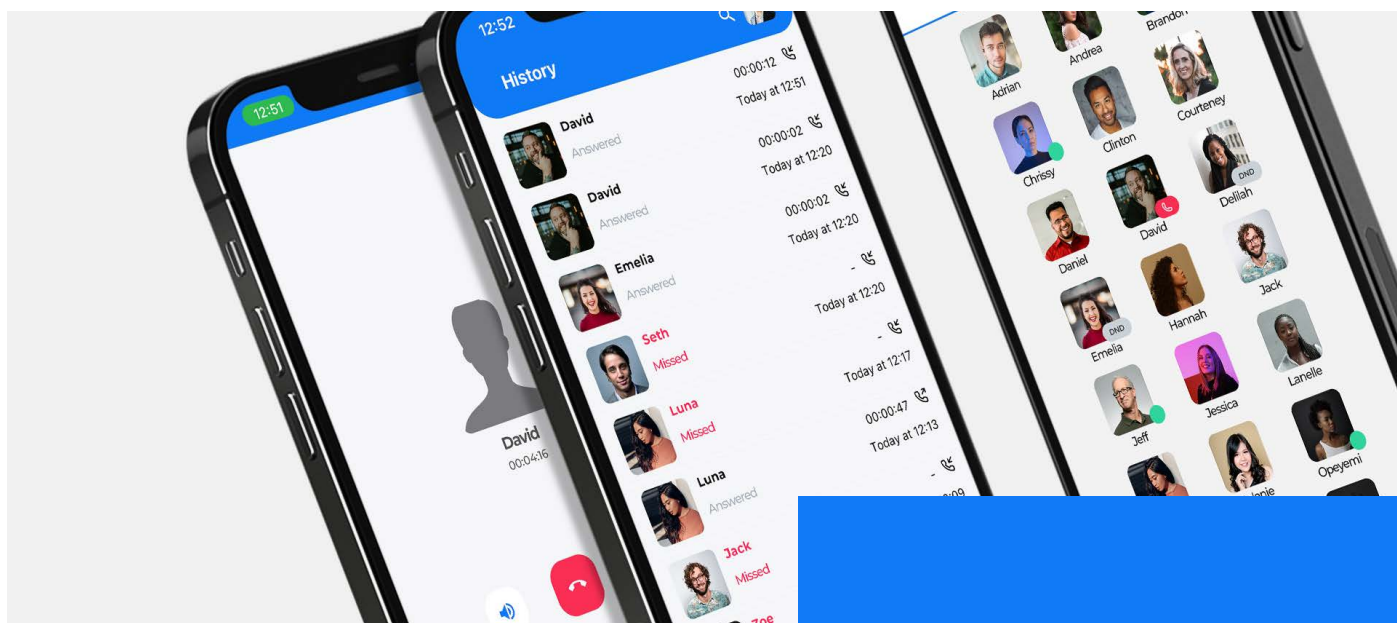


Portability & Mobility

MobeX provides an unmatched level of portability, allowing remote, hybrid and mobile teams to access advanced phone system features from anywhere with internet access. This flexibility lowers missed call rates, shortens call handle times and increases customer retention. Softphone technology creates reachable workers anytime, anywhere, resulting in customer satisfaction leading to increased customer loyalty and ultimately more profit.

Call History

With call history, users can view previous and missed call information all in one place. View user information as well as duration and times of calls in a simplistic display. Simply swipe on the call information to reveal the call button, enabling users to call back the specific contact.



Ease of Use and Fast Set up

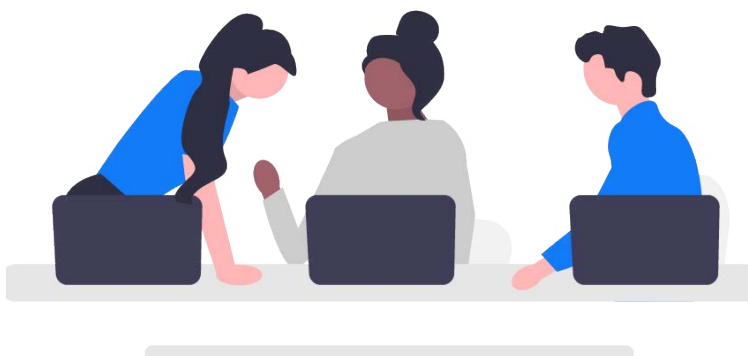
Business communication software can have a complicated and lengthy setup/installation process. However, with MobeX, you and your colleagues can start utilising all call features in a matter of minutes due to the auto-provisioning platform built into the core of the product. Receive your simple OTP (One-Time Password) and you really are good to go. The lack of required hardware virtually eliminates equipment installation time. The service is just one web browser away.

**Grow your business
with the ultimate set
of communication
features**



Team collaboration

In today's remote working environment, it is imperative for a healthy work-life to continue communication between colleagues. With MobeX+ you can increase your colleague's productivity with various collaboration tools that promote problem-solving, organisation and overall efficient working, keeping everyone in the loop with the day to day business duties.



4 out of 50+ Features



Caller ID

Choose which extension you ring out from. This can be disabled for certain users and extension numbers.



Easy Access

Quickly access MobeX+ with one tap when receiving a call while your device is on standby.



Clear Display

With the minimal and clear interface, you can view all your call and contacts data with ease.



MobeX, your way

Customise your mobile experience with incoming calls and notifications.



WebRTC Communications Platform