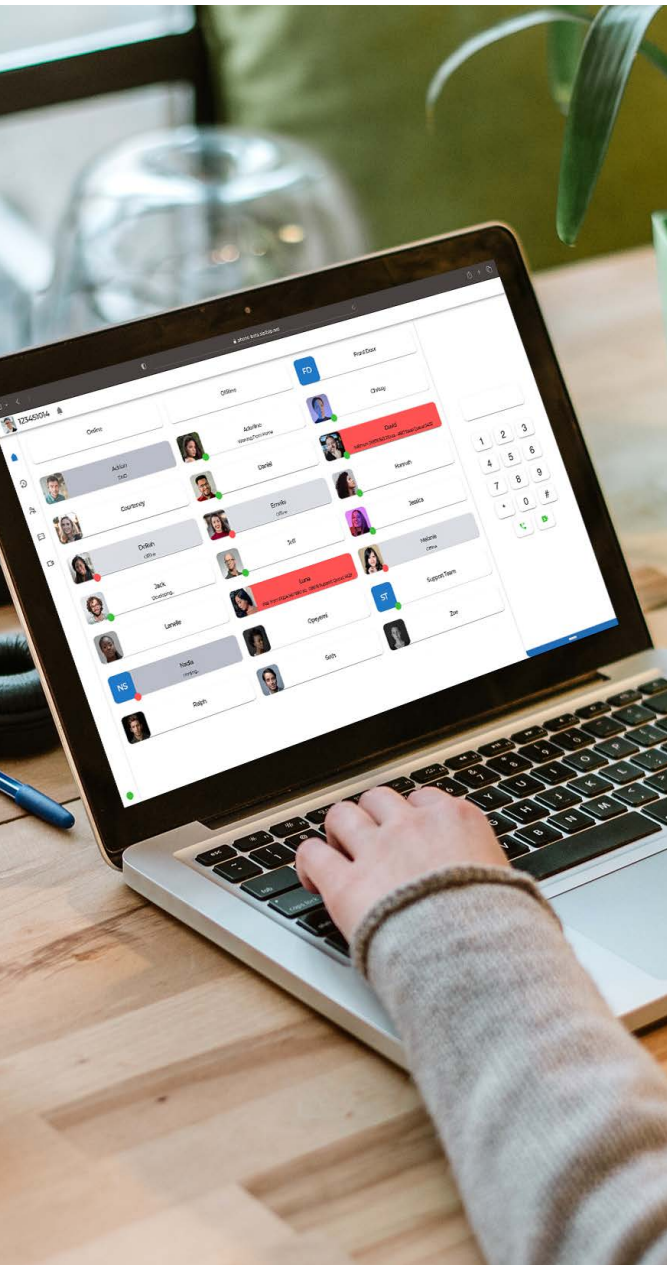




Unified Communication for PC & Laptop



Work from Anywhere  
Work with MobeX



# Multi-feature softphone client

MobeX is a WebRTC (Web Real-Time Communications) softphone client connected to NTA's hosted network, enabling you to manage your business communications easily and efficiently. Enjoy limitless communications with ease of use to make and receive telephone calls over a secure encrypted internet connection. Simply connect your business extensions to MobeX licences to start reaping the rewards of digital calling.

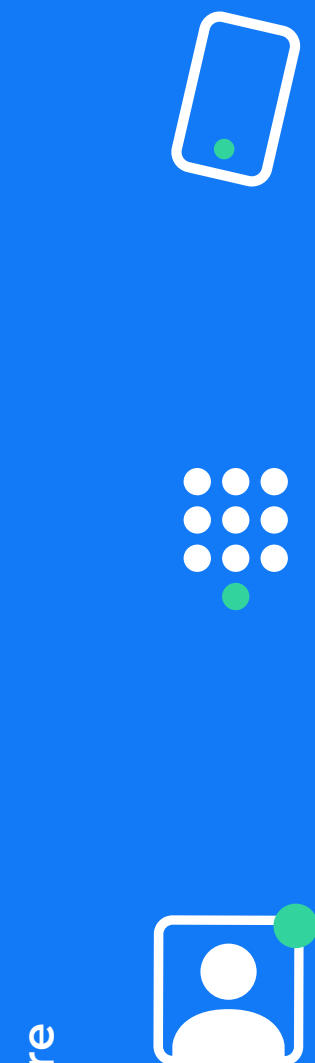
With MobeX, users have the communication tools they need to work efficiently and productively, whether in the office or working remotely.

MobeX Web is a versatile multi-media IP system available on PCs and laptops that delivers high quality voice and video. MobeX Web can be used as a primary desktop phone in conjunction with a physical deskphone, a supplemental phone or a remote/telecommunication device. With MobeX Web, businesses are now able to optimise business practices and drive workforce engagement.

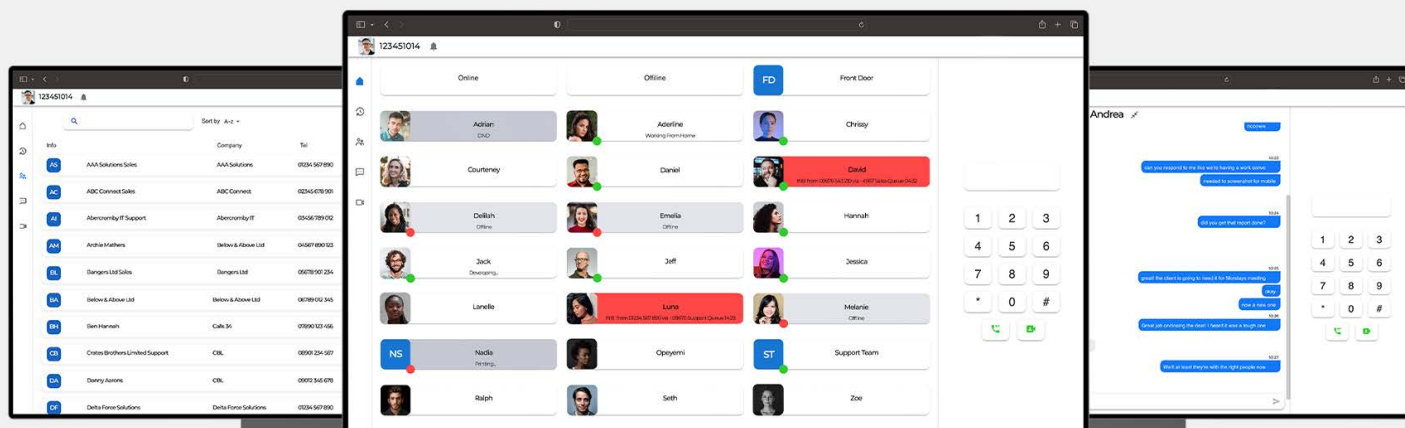


## Accessible from anywhere

MobeX Web is available on most web browsers including Google Chrome and Microsoft Edge, providing any type of user access to the softphone no matter the tools they use.



Work from anywhere



## User Friendly Interface

The modern and intuitive interface improves user experience by making it easier to navigate and access softphone features, saving time and increasing productivity. Mobex's visually appealing aesthetic also provides opportunities to benefit from interactive features, such as hover actions allowing to select the right feature needed on the very next click, making the softphone more powerful and versatile than ever before.

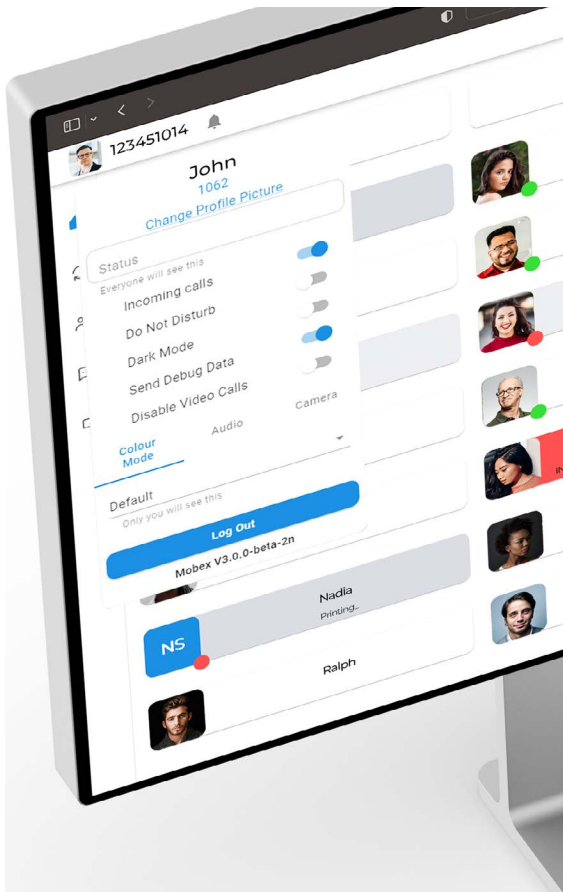
## Easy to use Dialpad

With the addition of the collapsible dialpad, users can quickly make calls with ease from any page within Mobex. Navigate through the softphone knowing calls are just one click away. Simply type or paste in a number to get started. The dialpad area also houses all the controls for various call functions keeping everything in one place.

## Presence

Sometimes better known as Busy Lamp Keys (BLF) takes knowing who in your organisation are on calls to the next level. See clearly who is on a call plus duration and other useful statics like inbound or outbound calls. In today's predominantly remote working environment, it is imperative to know when team members are online and offline. User presence capabilities provide company-wide real-time user status updates. Know when users are available, on lunch, in am meeting, not in the office, on Do Not Disturb and more with user status indicators.

Mobex is built with efficiency in mind and being able to access features with the click of a single button is vital for improving user experience. On each busy lamp field, users simply hover to reveal a selection of quick actions to further communicate with other users including chat, 1-2-1 video call or make a call simple call to another user.

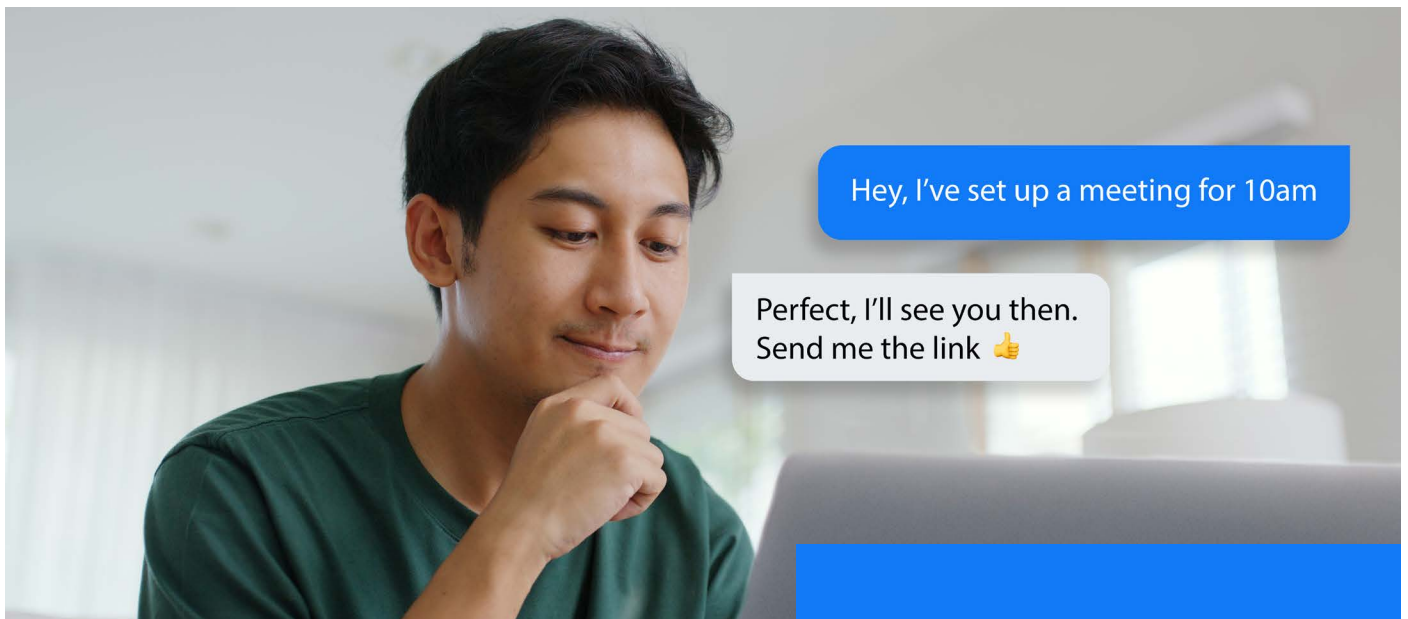


## Customisation

MobeX Web is designed for users to work the way they want to. Make MobeX your own by personalising details and features such as profile images, setting custom statuses and adjusting colour modes for vision deficiency and dark mode.

## Contacts

Search, view and sort all of your user contacts. MobeX is synced up to your cloud contacts making it easier than ever to view and interact with your customers and colleagues.



## Instant Messaging

Eliminate time-consuming email threads and miscommunication with real-time instant messaging. Chat conversations can be displayed full screen with the option to quickly view both current and previous chats. If you wish to take chats into other pages, simply minimise the conversation to enable chat pop ups.

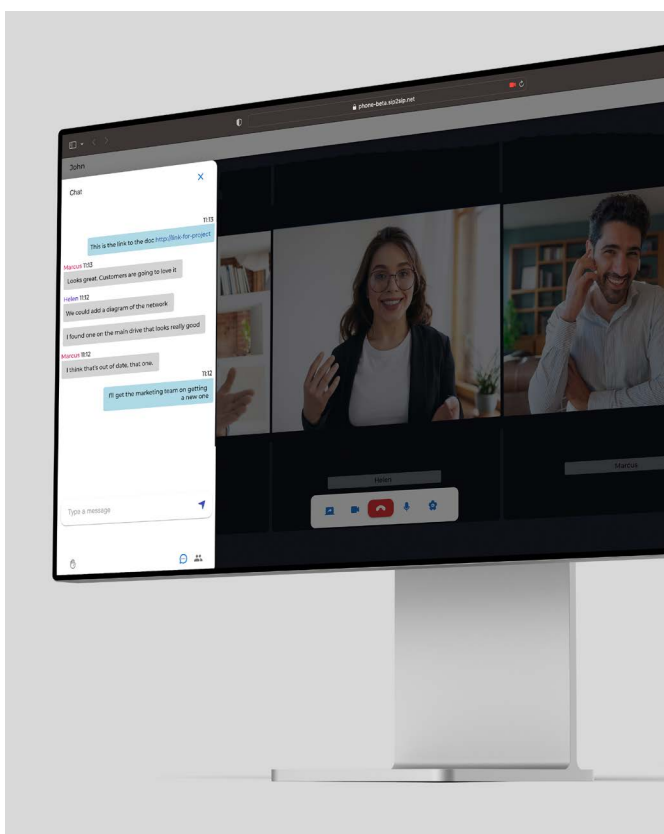
**Grow your business  
with the ultimate set  
of communication  
features**



## Video Conference

In today's highly remote working environment, it is imperative for a healthy work life to continue communication between colleagues.

With MobeX Web, you can increase your colleagues productivity with various collaboration tools that promote problem-solving, organisation and overall efficient working.



MobeX's smart and inclusive video conferencing feature enhances the quality of the video experience, giving you the confidence to look and sound your best while making everyone feel included. The platform is designed to be user-friendly, so even those who are not tech-savvy can quickly learn how to use it.

With MobeX, you can organise virtual meetings without worrying about technical difficulties or connectivity issues. The platform's reliability ensures that you can focus on the meeting's agenda, without interruptions or delays. Additionally, MobeX provides a secure platform, ensuring that all your meetings remain confidential and private.



## **Hybrid Working**

Without a centralised piece of hardware processing your calls, cloud-based softphones enable work-from-home and work-away-from-the-office possibilities for positions that would otherwise be in-office only. Using cloud technologies, your business phone system is accessible from anywhere with an internet connection.

## **Ease of use & Fast Set up**

Business communication software can have a complicated and lengthy setup/installation process. However, with MobeX, you and your colleagues can start utilising all call features in a matter of minutes due to the auto-provisioning platform built into the core of the product. Receive your simple OTP (One-Time Password) and you really are good to go. The lack of required hardware virtually eliminates equipment installation time. The service is just one web browser away.

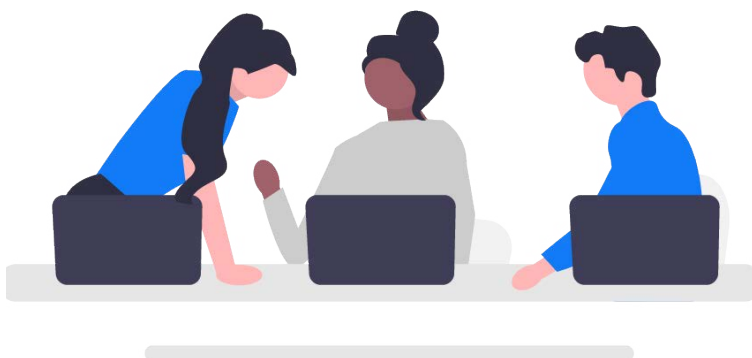
## **Call History**

With call history, users can view previous and missed call information all in one place. View user information as well as duration and times of calls in a simplistic display.



## Team collaboration

In today's highly remote working environment, it is imperative for a healthy work life to continue communication between colleagues. With MobeX Web, you can increase your colleagues productivity with various collaboration tools that promote problem-solving, organisation and overall efficient working.



### 4 out of 50+ Features



#### Multi-Screen Sharing

Multiple users within a video conference are able to display their desktop screens simultaneously during meetings



#### Chat Pop Ups

Take your conversations to other pages with collapsible messaging windows.



#### Personalised Status

Haven't dedicated a feature code to a specific status? No problem. Simply enter any status you wish into the fill box to display a custom status.



#### Caller ID

Choose which extension you ring out from. This can be disabled for certain users and extension numbers.



WebRTC Communications Platform